



Nebula

design by Studio V

The shape of the Nebula sofa expands upon the sophisticated and playful curves of the Meteor chair. The proprietary blend of high-density, injection-molded, closed-cell, cold-cured comfort foam ensures maximum comfort. Available to be specified with matte black or silver wire framework, two-tone upholstery and emphasized stitch.

Statement of Line



Sofa

Designer: Studio V

Via Seating's visionaries are made up of a multidisciplinary team that work together to imagine-er signature products and concepts for Via. Studio V has a depth of expertise in mechanical and sustainability engineering, ergonomics, fashion design and project management. Together, this team crafts modern, sophisticated and original seating solutions that are ergonomic, beautiful and sustainable.



Nebula spec sheet

Key Features



1. Designer Shape

Pleasant curve with thick, comfortable cushioning.

2. Dual Upholstery

Single & two-tone upholstery options.

3. Comfort Foam

A proprietary blend of high-density, injection-molded, closed-cell, cold-cured comfort foam so durable and lasting it is backed by Via Seating's 12 year warranty.

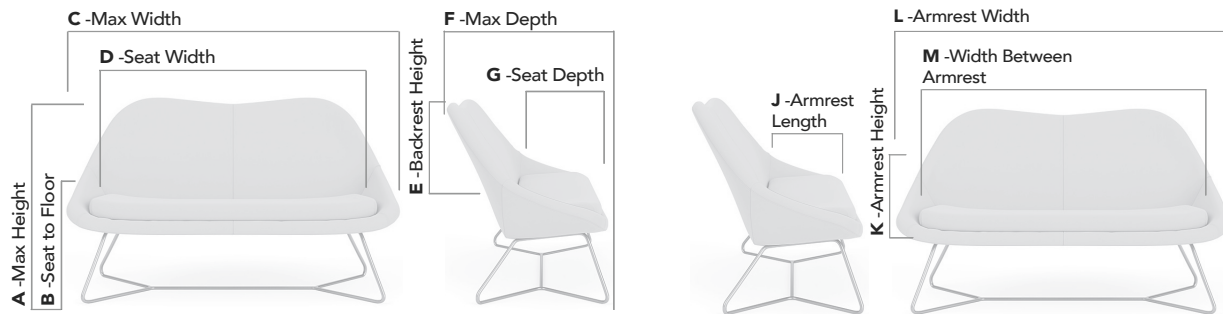
4. Bases

Gorgeous silver or matte black wire frame base with integrated arms.

Quick Ship: 2 sofas produced in a 48 hour period.

Warranty: 6 year warranty.

Dimensions



- A. 37.5"
- B. 17.0"
- C. 59.0"
- D. 51.0"
- E. 26.0"
- F. 33.0"
- G. 21.0"

- J. 16.0"
- K. 7.5"
- L. 60.0"
- M. 56.0"

Max Weight: 500 lb

Dimensions Notice: Dimensions are recorded by Via Seating engineers using a BIFMA Chair Measuring Device® (CMD) & the BIFMA Universal Measuring Procedure. This is a weighted device, which simulates an actual person sitting in a chair. This allows the results to be true to actual use of the chair. Within these actuals, our engineers record the true seat reference point (SRP) or seat depth measurement, defined as the slight indentation in the lumbar (ie. where the sitter is benefiting from the lumbar support) to the front edge of the seat. This important accurate measurement is useful for ergonomists to correctly match up the SRP to hip to knee measurements, helping the sitter achieve an ideal three finger gap between the back of the leg to the edge of the seat. For the purpose of Spec It & marketing tools, this number is rounded to the nearest 0.5.

Nebula spec sheet

Options

Upholstery Layouts



Single



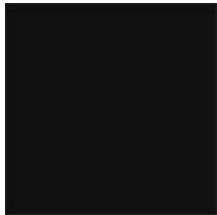
Two-tone

Glides

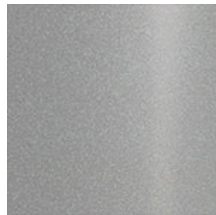


Optional felt glides

Surface Finishes



Matte black



Silver

Sustainability

Nebula was designed using a Design for the Environment (DfE) design approach. During this process, all components were screened to identify and assess the human and ecosystem health impacts of chemicals of concern. We screened all product components to the ANSI/BIFMA e3-2019 Annex B- List of Chemicals of Concern and the California Proposition 65 List.

Nebula has been tested in accordance with ANSI/BIFMA Standard Method M7.1-2011 (R2016) and complies with ANSI/ BIFMA e3-2019e Furniture Sustainability Standard, Sections 7.6.1, 7.6.2, and 7.6.3.

Nebula is BIFMA LEVEL 2 certified.

Nebula is CLEAN AIR GOLD certified / certified low emitting.

Nebula is Health Care Without Harm compliant (HHI compliant).



Visit ViaSeating.com

© Via Seating 2022. All rights reserved. Product specifications are subject to change without notice.

