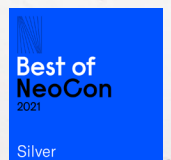


Onda

via
SEATING





Sleek, sculptural
& innovative—
Onda redefines
conference &
executive seating
with seamless
motion &
ergonomic support.



Inspired by movement, crafted for elegance, designed for ultimate comfort.

In the world of seating, the Onda chair stands as a testament to the perfect harmony of art and function. The name "Onda," derived from the Italian word for wave, captures the chair's fluid form & the effortless movement it offers. Every curve and contour of Onda reflects a design philosophy centered on elegance, comfort & innovation.

Inspired by the rhythm of natural motion, Onda was crafted to embody the essence of seamless transitions. From the moment you sit, the chair's synchronized movement responds intuitively, adapting to your posture and supporting your body through every shift. This dynamic functionality is paired with a striking sculptural design, making it equally at home in a high-powered boardroom or a modern executive office.

At the heart of Onda's creation lies a commitment to precision and craftsmanship. Designed with Italian aesthetics & manufactured in the United States, the chair showcases a meticulous attention to detail. Its sleek frame options, including matte light grey and black finishes, complement its breathable mesh selections—offering both modern aesthetics & ergonomic support.

Onda's designers sought to redefine conference & executive seating by blending innovation with sustainability. The materials are responsibly sourced, aligning with modern environmental standards while maintaining the highest levels of durability. The chair's ergonomic focus ensures not only lasting comfort but also promotes workplace wellness by encouraging natural movement throughout the day.

More than just a piece of furniture, Onda is a statement—a symbol of refined taste and a commitment to exceptional design. It invites users to experience the perfect balance of form, function & freedom, transforming every workspace it graces.

This is Onda: a chair that doesn't just support you—it moves with you, elevating both your comfort and your environment.





Smart Features



Adaptive Wave Support
The unique wave shape of the back intuitively supports the natural lower lumbar, the middle thoracic & the upper cervical curves of the spine utilizing the advanced 4-way elastomeric comfort mesh.



Dynamic Adjustable Arms
Onda's dynamic 6D arms adjust fully to support any posture, body type & work style. With 360° pivot, 6 locking positions, forward/backward movement & 9 height adjustments, they adapt seamlessly.



Proprietary Synchro Technology
Experience our ergonomic synchro control with seat depth adjustment, forward tilt & a smooth, comfortable ride. Featuring quick tension adjustment, 5-position back tilt lock & intuitive controls for a fully customized sit.



Luxurious All-Floor Casters
The award-winning Onda chair features exclusive two-tone, open-design casters. Crafted in Italy, they're quiet, scratch-resistant & include a reverse-locking safety feature to prevent rolling when you stand.



Onda Collection

Onda offers a cohesive family of chairs, blending sleek design, ergonomic support & versatile options for conference, executive & task seating.



Mid back, mesh seat



High back, mesh seat



Patented copper mesh



Sit-to-Stand



Mid back, upholstered seat



High back, upholstered seat



Stool



Eclipse preferred guest chair

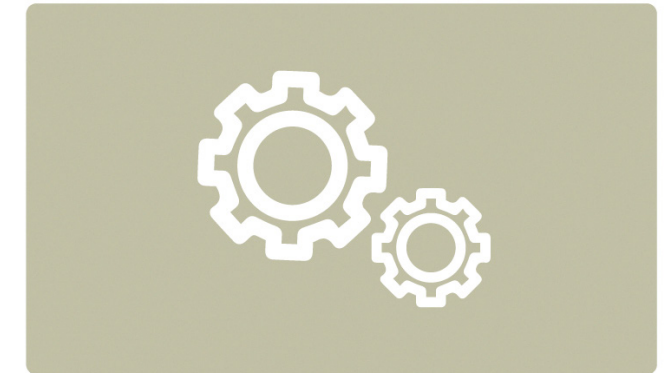


Sustainability



DfE Lead Design →

All Via Seating products follow the Design for the Environment (DfE) **design approach**. During this process, all components are screened to identify and assess the human and ecosystem health impacts of chemicals of concern. We screen all product components to the ANSI/BIFMA e3-2019 Annex B- List of Chemicals of Concern and the California Proposition 65 List.



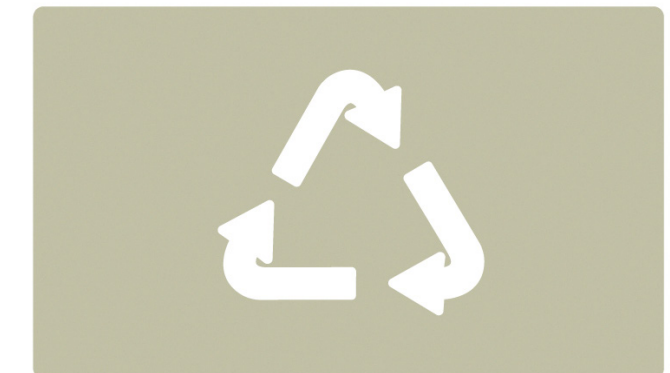
Vigorous Testing →

Our products are annually assessed by a 3rd party team of chemists & globally-recognized ISO 17025 accredited lab. They are rigorously tested for conformance to ANSI/BIFMA e3 standard credits 7.6.1, 7.6.2 and/or credit 7.6.3 as well as conformance to low-emitting materials. Prior to product launch, every product is continuously developed testing its functionality & durability within Via Seating's ISO 17025:2017 accredited **lab**.



Environmental Impact →

All Via Seating products are BIFMA LEVEL® certified. LEVEL® is an evaluation and certification system for environmentally-preferable and socially-responsible office furniture. 3rd party certification is achieved by conformance to a multi-attribute standard created by the Business and Institutional Furniture Manufacturer's Association (BIFMA) that evaluates product impacts across categories including Materials, Energy, Human Health and Social Responsibility.



End of Life ↻

Via Seating provides accessible **care guidelines** that help maintain the quality of every product and easy-to-follow **disassembly instructions** when a product reaches the end of its life.



Options

Backs



Mid



High

Seats

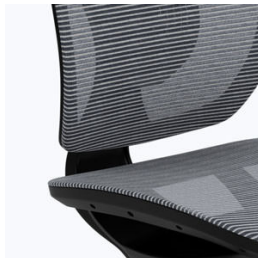


Mesh



Upholstered

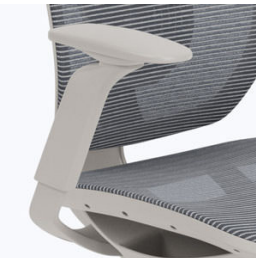
Arms



Armless



Black 6-way



Grey 6-way

Controls



Body balance



Quick adjust synchro



Quick adjust synchro
+ seat depth



Quick adjust synchro
+ seat depth +
forward tilt

Lumbar Support



No added support



Black adjustable



Grey adjustable

Bases



Black 5-star base



Polished 5-star



Black high-profile
5-star



Grey high-profile
5-star

Stool Heights



Tall stool



Extra-tall stool



Sit-to-stand with a
telescoping gaslift

Casters & Glides



Black carpet for
low-profile bases



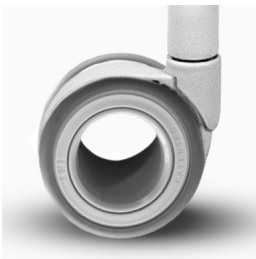
Grey-black all floor
for low-profile bases



Black glides



Black open-design
for high-profile base



Grey open-design
for high-profile base

Frames



Black



Grey

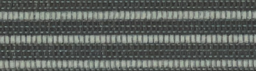
Mesh



Black



Nickel



Silver-Grey



Black copper



Natural copper
striped



via
SEATING

© Via Seating 2025. All rights reserved. Product specifications are subject to change without notice.