

Rise

via[®]
SEATING





Affordable,
ergonomic, and
stylish—Rise
enhances any
workspace with its
European design
and customizable
comfort.



Elevate your space with Rise—where elegance, comfort & versatility meet.

Crafted with a blend of European design and ergonomic precision, Rise brings elegance and comfort to every environment—from conference rooms and collaborative hubs to offices and touchdown spaces.

Designed for versatility, Rise offers an array of customization options, including sleek arm choices, upholstery selections & base configurations, ensuring it seamlessly integrates into any space. Its lightweight frame and stacking capability make it easy to reconfigure or store—delivering both form and function without compromise.

Rise goes beyond aesthetics with a focus on sustainable design, using premium materials selected for their durability and environmental responsibility. Each chair is built with Via Seating's signature comfort, ensuring an elevated sitting experience, whether for a quick meeting or an extended collaboration.





Smart Features



Mesh: Breathability & Style

Rise mesh high-tensile strength offers both flexibility & support, contouring to the body for ergonomic comfort without sagging or losing shape over time.



Ultimate Adjustable Arms

The 6-way adjustable arms on Rise aren't just functional—they're transformative, blending intuitive design with unmatched adjustability. Move the arms up/down, in/out & rotate the armrest.



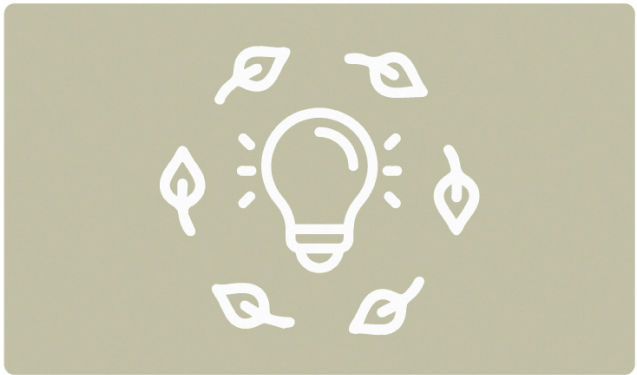
Proprietary Synchro Technology

The body balance synchro is designed with precision engineering and intuitive functionality, allowing users to move freely while maintaining exceptional support. Includes an integrated seat depth adjustment & 4-position back lock.



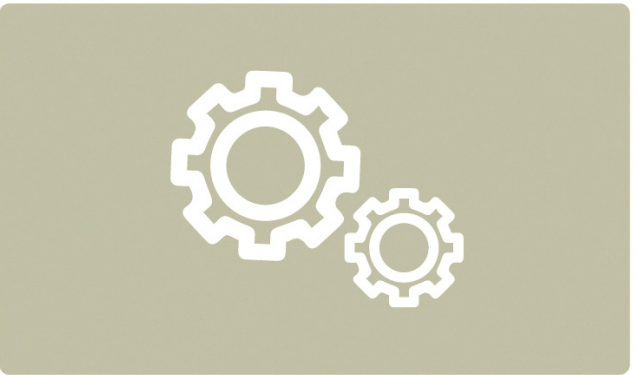


Sustainability



DfE Lead Design →

All Via Seating products follow the Design for the Environment (DfE) **design approach**. During this process, all components are screened to identify and assess the human and ecosystem health impacts of chemicals of concern. We screen all product components to the ANSI/BIFMA e3-2019 Annex B- List of Chemicals of Concern and the California Proposition 65 List.



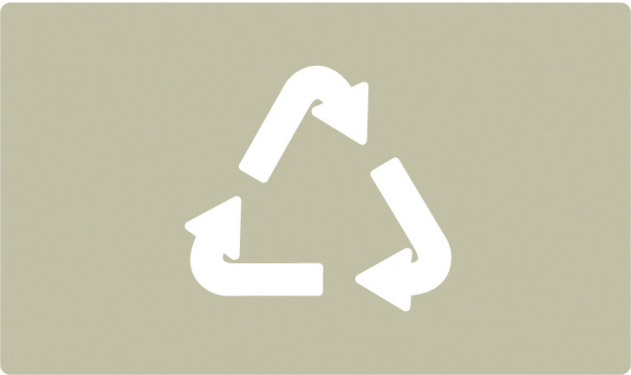
Vigorous Testing →

Our products are annually assessed by a 3rd party team of chemists & globally-recognized ISO 17025 accredited lab. They are rigorously tested for conformance to ANSI/BIFMA e3 standard credits 7.6.1, 7.6.2 and/or credit 7.6.3 as well as conformance to low-emitting materials. Prior to product launch, every product is continuously developed testing its functionality & durability within Via Seating's ISO 17025:2017 accredited **lab**.



Environmental Impact →

All Via Seating products are BIFMA LEVEL® certified. LEVEL® is an evaluation and certification system for environmentally-preferable and socially-responsible office furniture. 3rd party certification is achieved by conformance to a multi-attribute standard created by the Business and Institutional Furniture Manufacturer's Association (BIFMA) that evaluates product impacts across categories including Materials, Energy, Human Health and Social Responsibility.



End of Life ↻

Via Seating provides accessible **care guidelines** that help maintain the quality of every product and easy-to-follow **disassembly instructions** when a product reaches the end of its life.



Options

Seats



Contoured

Arms



Armless



Black 6-way



Grey 6-way

Controls



Tilt with back lock



*Body balance
synchro*

Lumbar Support



*Lumbar support
insert*

Bases



Black 5-star base



Grey 5-star base

Stool Heights



Tall stool

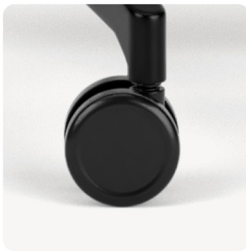


Extra-tall stool



*Sit-to-stand with a
telescoping gaslift*

Casters



Black carpet

Frames

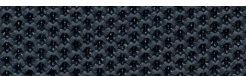


Charcoal black



Cloud grey

Mesh



Charcoal black



Light grey



Vibrant blue

Accent bar



Black



Light grey



Vibrant blue

