

solutions

Seating Collection Overview 2021



via
SEATING

Via Seating's Solutions

AN INTRODUCTION 4

TASK, CONFERENCE & EXECUTIVE... 24

Onda..... 26

Genie Flex® 28

Genie Copper Mesh®..... 30

Genie®..... 32

Run II..... 36

4u.....38

Proform®..... 40

Vero44

Carmel 46

LOUNGE & SOFT SEATING 54

Muir 56

Astro..... 58

Meteor..... 60

Nebula 62

Comet..... 64

Muir38

Nebula40

MULTI-USE, STACKING & NESTING... 68

Eclipse70

Reset..... 72

Splash 74

Zee..... 76

Eclipse Wired.....78

SplashAir..... 80



an introduction

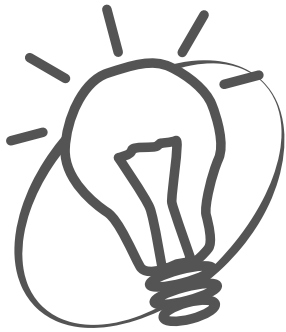


we are visionaries

Via Seating's vision is to create the perfect sitting experience through the creative capability of our team of engineers, ergonomists and designers. Via creates comfortable chairs with innovative technology at an incredible value backed by an industry-leading warranty.



it's all in our DNA



thoughtful design

As seating specialists, the Via Seating design team, Studio V, concentrates on every level of detail when it comes to design, performance and longevity.



strongest warranty

Via Seating delivers with the strongest warranty for executive, conference and task seating. This means 12 years on all components including foam and including labor (for supporting dealer).



stellar quick ship

Via Seating offers quick ship on all seating solutions, with the only exception being outdoor landscape furniture. This quick ship is a 48 hour manufacturing time even on lounge seating.

More at [**viaseating.com/quick-ship/**](https://viaseating.com/quick-ship/)



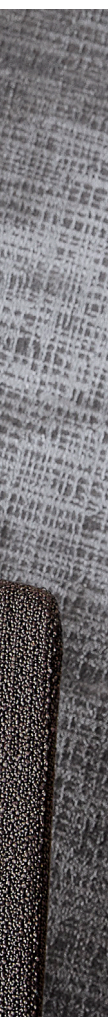
manufacturing quality seating solutions

Via Seating has a full-time new product development team consisting of engineers, designers and market experts. This team is continuously working on research, development and improvement of products.

Via Seating's design team utilizes 3D printer technology to sculpt and test custom parts. First, the team shapes a part such as a new arm width adjustment bracket in a 3D modeling software. This is then printed by the 3D printer, which builds the part to spec in modeling plastic. Finally, the true-to-size prototype is tested for look, feel and functionality in its application. This results in thorough parts shaped exactly to function seamlessly with the final chair design and deliver a great seating experience.

proprietary comfort foam



A vertical strip on the left side of the page showing a close-up of the brown textured fabric.

Via Seating foam is sculpted to provide body balance technology built directly in the cushioning of the seat and back. It is injected into an engineered mold at controlled, differing rates, which creates strategic, multi-density levels within each cushion. This process builds a subtle seat contour that maximizes support exactly where it is needed—where body weight is most concentrated. The outer edges by contrast, are made softer and in a waterfall slope so that the seat does not restrict circulation where the legs extend out over the edge of the seat. Closed-Cell refers to the fact that the foam has a smooth outer skin that is kind to fabric. It does not rasp on the upholstery from the inside. The foam does not absorb moisture. It protects the foam over-time and does not break down. The comfort of Via Seating foam has the same comfort 12 years later. Cold-Cured refers to the consistency in size of the air cells within the foam. The foam is not layered foam. The foam is one single, contoured and resilient piece of foam.



craftspersonship

Via Seating chairs are hand-sewn by highly skilled sewers with a strong emphasis on attention to detail. The sewing team offers an apprenticeship program for those new to sewing and a tiered program for those of intermediate-level skills to higher. Only advanced-level sewers are approved to work on projects requiring the most extensive detail work. Quality checks and approval is signed off before a chair can advance onto the next stage in its build out.



a sustainable approach to seating

At Via Seating we believe great things happen in a chair. We understand that to make this happen, it takes a lot more than creating a great chair. Discover how we're committed to developing a greater, more inclusive workplace, a greater, more sustainable environment, and greater, more enriched communities. Learn more at [**viaseating.com/a-great-chair-a-great-world**](https://viaseating.com/a-great-chair-a-great-world).



a consultative listening approach to product specification

As a seating specialist, Via has a creative spirit driven to innovate. The company's creative energy is highly focused on all categories of seating, from indoor environments to outside open spaces. Via offers the broadest range of seating under one brand synonymous with quality, comfort and reliability. The Via online presentation creates the opportunity to wonder, to think differently and to have a sense of surprise at every click. Every product shown there has its own story and a reason for being that sets it apart in the market. There is more than meets the eye with every piece, such as Via's first-to-market copper infused biocidal mesh collections, an innovation inspired by solving a problem for a client. Another example, the interactive, lobby lounge collections support wellness and collaboration by encouraging playful movement. Each piece tells its own story and delivers an experience that encourages ongoing discussion and exploration. Via believes they are one step away from the next great discovery born from listening to clients and responding with great solutions to meet the challenges of our time.

solutions from Via Seating







task, conference
and executive





Onda



All products on contract with GSA. CONTRACT #: GS-28F-005CA | 33721.



All products are BIFMA LEVEL 2 certified. This is BIFMA's sustainability certification program for furniture.

by Studio V

Discover instantaneous comfort personalized to the way you sit with with Onda—Italian for “Wave”—Via Seating’s award-winning, first all mesh chair. Onda supports both ergonomic and design philosophies and holds both in perfect harmony without any compromise.



DESIGNED FOR USE IN

Corporate	●	Higher Education	●
Financial	●	Hospitality	●
Government	●	K-12 Education	●
Healthcare	●	Legal	●





Genie Flex®



All products on contract with GSA. CONTRACT #: GS-28F-005CA | 33721.



All products are BIFMA LEVEL 2 certified. This is BIFMA's sustainability certification program for furniture.

by Henner Jahns and Studio V

This latest heavy-duty task chair uses a robust Thermoplastic Polyurethane (TPU) material that is remarkable. It is abrasion/scratch resistant, grease/oil stain resistant and is bleach cleanable. It is 100% chlorine free, PVC free and is fully recyclable. Genie Flex® is warranted for 12 years at 24/7 use for all components including the TPU.



DESIGNED FOR USE IN

Corporate	●	Higher Education	●
Financial	●	Hospitality	●
Government	●	K-12 Education	●
Healthcare	●	Legal	●





Genie Copper Mesh®



All products on contract with GSA. CONTRACT #: GS-28F-005CA | 33721.



All products are BIFMA LEVEL 2 certified. This is BIFMA's sustainability certification program for furniture.

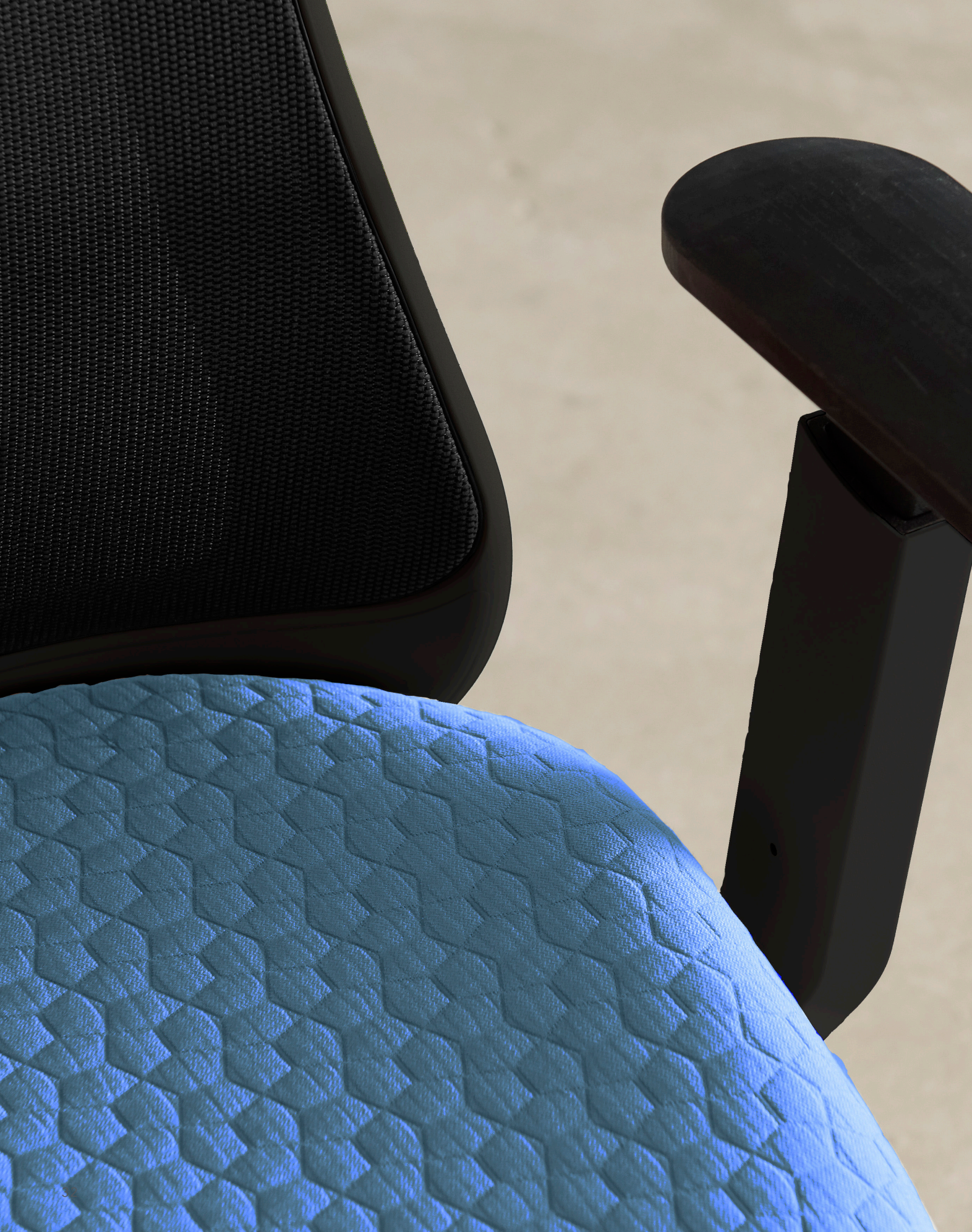
by Henner Jahns

Genie Copper Mesh® is a patented, first-to-market, award-winning, mesh back chair solution approved for use in healthcare environments and more. It uses a naturally self-sanitizing, biocidal, antiviral, antibacterial, antifungal and anti-odor, EPA registered copper that is physically embedded into the fibers of the mesh.



DESIGNED FOR USE IN

Corporate	●	Higher Education	●
Financial	●	Hospitality	●
Government	●	K-12 Education	●
Healthcare	●	Legal	●





Genie®



All products on contract with GSA. CONTRACT #: GS-28F-005CA | 33721.



All products are BIFMA LEVEL 2 certified. This is BIFMA's sustainability certification program for furniture.

by Henner Jahns

The distinctive genie lamp contours of Genie® promote movement by the way the back narrows at the top. It allows for upper body thoracic mobility in the shoulder area and provides comfort and support throughout the body. This creates an important sense of "room within the chair". Available with 6 seat sizes, all fitting in the same frame.



DESIGNED FOR USE IN

Corporate	●	Higher Education	●
Financial	●	Hospitality	●
Government	●	K-12 Education	●
Healthcare	●	Legal	●









Run II



All products on contract with GSA. CONTRACT #: GS-28F-005CA | 33721.



All products are BIFMA LEVEL 2 certified. This is BIFMA's sustainability certification program for furniture.

by Studio V

Run II offers 2 back sizes, 2 seat sizes and comes in stool versions. It is great for task and conference applications. Its distinct back is made of a seamless 4-way durable elastomeric mesh. Experience Run II in black or magnet grey framework with option of solid, copper or patchwork mesh patterns.



DESIGNED FOR USE IN

Corporate	●	Higher Education	●
Financial	●	Hospitality	●
Government	●	K-12 Education	●
Healthcare	●	Legal	●





4u



All products on contract with GSA. CONTRACT #: GS-28F-005CA | 33721.



All products are BIFMA LEVEL 2 certified. This is BIFMA's sustainability certification program for furniture.

by S.I. Design

4u is a cutting edge Italian seating series. Its flowing sleek lines add to the ambiance of sophistication in any environment while also providing incredible ergonomics, comfort and functionality. 4u offers two seat shape options: the euro slim line sit and the enhanced comfort sit.



DESIGNED FOR USE IN

Corporate	●	Higher Education	●
Financial	●	Hospitality	●
Government	●	K-12 Education	●
Healthcare	●	Legal	●





Proform®



All products on contract with GSA. CONTRACT #: GS-28F-005CA | 33721.



All products are BIFMA LEVEL 2 certified. This is BIFMA's sustainability certification program for furniture.

by Studio V

Discover beauty and comfort with Via Seating's leading conference room chair, Proform®. Available as a diamond stitch, parallel stitch, panel stitch or mesh back. Pairs with a proprietary comfort foam seat and extensive selection of fixed or adjustable arms.



DESIGNED FOR USE IN

Corporate	●	Higher Education	●
Financial	●	Hospitality	●
Government	●	K-12 Education	●
Healthcare	●	Legal	●









Vero



All products on contract with GSA. CONTRACT #: GS-28F-005CA | 33721.



All products are BIFMA LEVEL 2 certified. This is BIFMA's sustainability certification program for furniture.

by Orlandini Design

Vero offers comfort, functionality and a depth of options within defined lines that angle up an appealing back and around its seat. Sink back into Via Seating's proprietary comfort foam injection-molded around Vero's sturdy, metal framework. Available as a mid or high back.



DESIGNED FOR USE IN

Corporate	●	Higher Education	●
Financial	●	Hospitality	●
Government	●	K-12 Education	●
Healthcare	●	Legal	●





Carmel



All products on contract with GSA. CONTRACT #: GS-28F-005CA | 33721.



All products are BIFMA LEVEL 2 certified. This is BIFMA's sustainability certification program for furniture.

by Studio V

Embrace the superior executive, conference and execu-task seating series, Carmel. Subtle curves and classic tuxedo styling across the front and back deliver style from every angle. The proprietary comfort injection-molded foam around automotive inspired 100% steel framework promise endless comfort and durability.



DESIGNED FOR USE IN

Corporate	●	Higher Education	●
Financial	●	Hospitality	●
Government	●	K-12 Education	●
Healthcare	●	Legal	●

high-performance task mesh backs



Onda mesh offers a choice of mid or high back heights and 7 mesh colors including patented proprietary copper-infused mesh. Offered in chair, stool or extra-tall stool heights.



Genie Flex® chairs have a choice of black or magnet grey frames, 5 TPU mesh colors and 6 seat sizes: petite to heavy-duty, extra-large. Available as a chair, stool or extra-tall stool.



Genie® chairs have a choice of black or white frames, 9 mesh colors and 6 seat sizes: petite to heavy-duty, extra-large. Available in chair, stool or extra-tall stool heights. Optional lumbar add on.



Run II backs offer a choice of mid or high back heights, black or magnet grey frames and 7 mesh colors including patchwork patterns. Offered as a chair, stool or extra-tall stool.



4u mesh backs offer black or white frames, 5 mesh colors and slim line seats or an enhanced comfort seat upgrade. Optional lumbar add on. Available as a chair, stool or extra-tall stool.

high-performance task upholstered backs



4u upholstered offers black or white frames and slim line seats or an enhanced comfort seat upgrade. Many optional ergonomic features. Available as a chair, stool or extra-tall stool.



4u groove deliver the slim profile of a mesh back with the comfort of an upholstered back. Available with black or white frames, 7 groove colors and slim line seat or an enhanced comfort seat upgrade. Available as a chair, stool or extra-tall stool.



Brisbane HD 24/7 backs offer mid and high back heights, 6 seat sizes: petite to heavy-duty, extra-large and a headrest add on on the mid backs. Available as a chair, stool or extra-tall stool.



Brisbane backs offer mid backs and high backs with an adjustable headrest. 5 seat sizes: petite to large. Available as a chair, stool or extra-tall stool.



Riva upholstered backs offer a mid back height. Available as a chair, stool or extra-tall stool.

executive and conference



Onda offers a choice of mid or high back heights and 7 mesh colors including patented proprietary copper-infused mesh. Available with black or light grey dipped-look framework.



Proform® backs are available with detailed panel, parallel or diamond stitch patterns. Offered with a variety of fixed cantilever, loop and additional arm styles. Ratchet adjustable back feature.



Carmel executive/conference seating includes a single or split shell mid or high back. Both can be enhanced with the executive diamond stitch on the upper, front portion of the back/headrest.



Vero backs offer a choice of mid or high back with an integrated ratchet adjustable back feature. Available with multiple fixed and adjustable arms including unique to series upholstered panel arms.



Genie® chairs have a choice of black or white frames, 9 mesh colors and 6 seat sizes: petite to heavy-duty, extra-large. Optional lumbar add on. Available armless or with a lovely fixed arm.



GenieFlex® chairs have a choice of black or magnet grey frames, 5 TPU mesh colors and 6 seat sizes: petite to heavy-duty, extra-large. Available armless or with a lovely fixed arm.

executive and conference



Linate is a classic Via Seating series featuring proprietary injection-molded foam and automotive inspired steel framework. Available as a high back or mid back.



Oslo is a heavy-duty executive seating series with up to a 400 lb weight capacity on select models. Available as a high or mid back with multiple arm options including a traditional upholstered arm.



Dyce single shell executive/conference chairs are designed to fit like a glove. Available with multiple adjustable or fixed arms. Offered as a high back or mid back.



Run II backs offer a choice of mid or high back heights, black or magnet grey frames and 7 mesh colors including patchwork patterns. Offers a unique to series loop arm. Optional guest chair.



4u offers black or white frames and choice of mesh, groove or upholstered backs paired with an original slim line seat or enhanced comfort seat upgrade.



Riva backs offer a mid back height with multiple fixed and adjustable arm options.

soft seating conference and desk chairs



Comet chairs on swivel bases offer the comfort of a glove-like seat and a height adjustment feature. Available with black, polished aluminum and brushed aluminum bases.



Edge desk & conference chairs offer multiple upholstery options & deliver 360 degree swivel with height adjustment. Available with black, polished or brushed aluminum bases.



Orbit conference chairs feature a classic round design with unique upholstery options & height adjustment. Available with black, polished or brushed aluminum bases.



Featuring Edge conference chairs.

jury seating



Featuring Dyce jury chairs.



Carmel jury chairs offer a variety of armless & fixed arm options. Features include height adjustment, return-to-center & return-to-max-height. Available on mid backs.



Dyce jury chairs offer a variety of armless & fixed arm options. Features include height adjustment, return-to-center & return-to-max-height. Available on mid backs.



Linate jury chairs offer a variety of armless & fixed arm options. Features include height adjustment, return-to-center & return-to-max-height. Available on mid backs.



lounge and
soft seating







Muir



All products on contract with GSA. CONTRACT #: GS-28F-005CA | 33721.



All products are BIFMA LEVEL 2 certified. This is BIFMA's sustainability certification program for furniture.

by Studio V

Consider your desired pose when reviewing a piece of art. You want to feel undisturbed in your reflection and focused on the object of your gaze. Having something comfortable but not puffed up, elegant but not aloof, uncomplicated but classically finished would be the perfect perch. This was the inspiration for Muir by Studio V.



DESIGNED FOR USE IN

Corporate	●	Higher Education	●
Financial	●	Hospitality	●
Government	●	K-12 Education	●
Healthcare	●	Legal	●





Astro



All products on contract with GSA. CONTRACT #: GS-28F-005CA | 33721.



All products are BIFMA LEVEL 2 certified. This is BIFMA's sustainability certification program for furniture.

by Studio V

Astro soars forward and breaks the mold by delivering a unique, interactive sitting experience like no other. Play with its rock, swivel and sway motion. It offers an opportunity to center one's self from any angle. Offering single and multiple upholstery layouts. Pairs perfectly with Chico and Luna ottomans.



DESIGNED FOR USE IN

Corporate	●	Higher Education	●
Financial	●	Hospitality	●
Government	●	K-12 Education	●
Healthcare	●	Legal	●





Meteor



All products on contract with GSA. CONTRACT #: GS-28F-005CA | 33721.



All products are BIFMA LEVEL 2 certified. This is BIFMA's sustainability certification program for furniture.

by Studio V

Meteor streaks across your interior in a blaze of style and flair and enters into the lounge scene, revealing a seat that is both sophisticated and playful. Its shape is a smaller scale cousin to Astro with choice of rock, swivel and sway motion experiences. Pairs with optional Chico and Luna ottomans. Optional two-tone upholstery layouts.



DESIGNED FOR USE IN

Corporate	●	Higher Education	●
Financial	●	Hospitality	●
Government	●	K-12 Education	●
Healthcare	●	Legal	●





Nebula



All products on contract with GSA. CONTRACT #: GS-28F-005CA | 33721.



All products are BIFMA LEVEL 2 certified. This is BIFMA's sustainability certification program for furniture.

by Studio V

Embrace Nebula sofa. Its shape expands upon the sophisticated and playful curves of the Meteor chair. The compact, clean profile of the Nebula sofa widens its applications making this perfect for lobbies, lounges, suites and more. The proprietary blend of injection-molded, closed-cell, cold-cured foam ensures maximum comfort.



DESIGNED FOR USE IN

Corporate	●	Higher Education	●
Financial	●	Hospitality	●
Government	●	K-12 Education	●
Healthcare	●	Legal	●





Comet



All products on contract with GSA. CONTRACT #: GS-28F-005CA | 33721.



All products are BIFMA LEVEL 2 certified. This is BIFMA's sustainability certification program for furniture.

by Studio V

Comet invites you to sit and unwind. Rest back into the contoured trim of its appealing mid back and along the designer curves of its integrated arms. Comet utilizes Via Seating's 360 swivel or rock and swivel mechanisms to deliver a motion-lounge experience you control. Pairs well with Luna and Chico ottomans.



DESIGNED FOR USE IN

Corporate	●	Higher Education	●
Financial	●	Hospitality	●
Government	●	K-12 Education	●
Healthcare	●	Legal	●

collaborative and lounge



Astro chairs have a high-profile back and cradling seat. Rock, swivel and sway. Available in a wide variety of fabrics and vinyls.



Muir chairs feature a striking design. Available with black or silver wire frames. Offered with a variety of textiles including leathers.



Meteor chairs deliver a spacious seat atop a wide variety of polished, silver and matte black bases. Also available with newest oak or walnut wood 4-leg bases. Explore single & two-tone upholstery layouts.



Nebula sofas deliver a spacious seat atop a black or silver wire frame base. The shape is a perfect match to the Meteor lounge chair.



Comet chairs offer soft seating conference, side/guest and lobby/lounge solutions. The open, cradling shape delivers exceptional comfort. The swivel feature encourages collaboration.

collaborative and lounge



Orbit chairs have a beautiful and simple, round shape. This can be paired with a duo of fabrics or vinyls. Available atop a wide selection of fixed and conference swivel bases.



Chico Chairs deliver with an open, armless seat perfect for leaning back or sitting up and during collaboration.



Chico ottomans offer multiple upholstery options atop the top and sides. Offers a variety of bases. Pair with Via lounge chairs.



Chico benches are open and spacious; reaching 40" and 60" long widths. Select from polished or brushed loop legs.



Edge chairs are gorgeous in single to tri-upholstery. Specify multiple fabrics across the seat, back and outer sides. Available atop a variety of fixed and conference swivel bases.





multi-use, stacking
and nesting





Eclipse



All products on contract with GSA. CONTRACT #: GS-28F-005CA | 33721.



All products are BIFMA LEVEL 2 certified. This is BIFMA's sustainability certification program for furniture.

by Angelo Pinaffo

Inspired by the 50th anniversary of the moon landing, Eclipse chairs have a continuous line, curved like the elliptical orbits of the spherical planets. Their shape generates a clean and essential seat, which conveys lightness. Choose from a stackable, unique v-leg, a classic beech wood or light task swivel base. Optional upholstered seat.



DESIGNED FOR USE IN

Corporate	●	Higher Education	●
Financial	●	Hospitality	●
Government	●	K-12 Education	●
Healthcare	●	Legal	●





Reset



All products on contract with GSA. CONTRACT #: GS-28F-005CA | 33721.



All products are BIFMA LEVEL 2 certified. This is BIFMA's sustainability certification program for furniture.

by Studio V

Reset is the compact nesting and light task seating experience that delivers comfort you can both see and feel. Sink back into its thick layer of proprietary injection-molded comfort foam with ergonomic, waterfall seat. Experience its smooth flex back to a full 22 degrees. Optional arms. Available as a task chair or stool and a



DESIGNED FOR USE IN

Corporate	●	Higher Education	●
Financial	●	Hospitality	●
Government	●	K-12 Education	●
Healthcare	●	Legal	●





Splash



All products on contract with GSA. CONTRACT #: GS-28F-005CA | 33721.



All products are BIFMA LEVEL 2 certified. This is BIFMA's sustainability certification program for furniture.

by Alberto Basagalia and Natalia Rota

Splash is a multi-faceted, sophisticated series designed to accommodate a wide variety of spaces. This mobile seating series includes high-density stacking side/guest chairs, stacking counter and bar stools, light task chairs, and light task stools. Available with poly, mesh or upholstered backs. Optional arms.



DESIGNED FOR USE IN

Corporate	●	Higher Education	●
Financial	●	Hospitality	●
Government	●	K-12 Education	●
Healthcare	●	Legal	●





Zee



All products on contract with GSA. CONTRACT #: GS-28F-005CA | 33721.



All products are BIFMA LEVEL 2 certified. This is BIFMA's sustainability certification program for furniture.

by GREY ID

Zee is the result of vision, form, function and style in harmony, made perfect for your space. Each sculpted poly shell curves around the body, providing a welcoming seat with integrated arms. Available as a light task chair or stool, bar stool, counter stool, stackable chair or executive guest chair. Optional upholstery.



DESIGNED FOR USE IN

Corporate	●	Higher Education	●
Financial	●	Hospitality	●
Government	●	K-12 Education	●
Healthcare	●	Legal	●





Eclipse Wired



All products on contract with GSA. CONTRACT #: GS-28F-005CA | 33721.



All products are BIFMA LEVEL 2 certified. This is BIFMA's sustainability certification program for furniture.

by Angelo Pinaffo

Eclipse Wired indoor/outdoor chairs have continuous lines, curved like the elliptical orbits of the spherical planets. Their shape generates a clean and intriguing seat. Available in 4 inspiring colors. Add an optional upholstered seat. Discover vintage beauty and essential comfort with this 2020 Red Dot Design winning seating series.



DESIGNED FOR USE IN

Corporate	●	Higher Education	●
Financial	●	Hospitality	●
Government	●	K-12 Education	●
Healthcare	●	Legal	●





Splash Air



All products on contract with GSA. CONTRACT #: GS-28F-005CA | 33721.



All products are BIFMA LEVEL 2 certified. This is BIFMA's sustainability certification program for furniture.

by Alberto Basagalia and Natalia Rota

Discover this unique Good Design award winning indoor/outdoor seating series that matches visually with the indoor Splash series. It has strategic holes in the back and seat, which increases breath-ability in the sit and prevents stagnation of water. Chairs, counter and bar stools stack 15 high on the ground. Optional arms.



DESIGNED FOR USE IN

Corporate	●	Higher Education	●
Financial	●	Hospitality	●
Government	●	K-12 Education	●
Healthcare	●	Legal	●

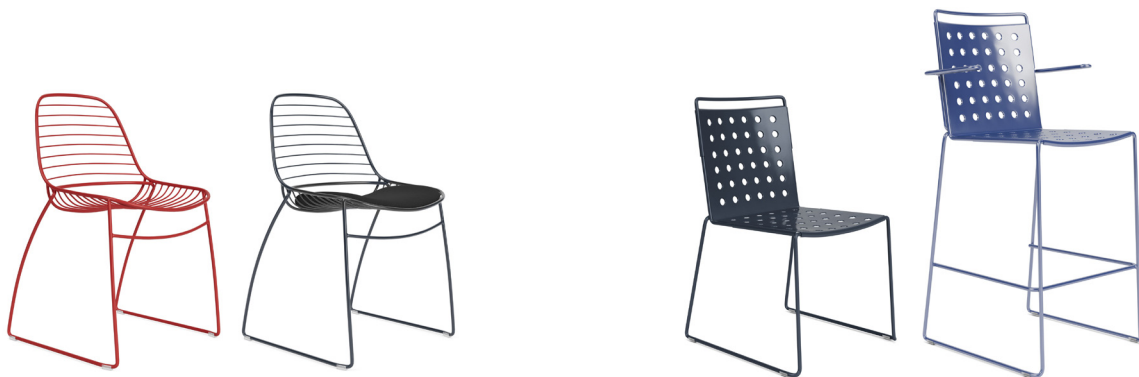
multi-use (includes stacking, light task, stools & indoor-outdoor)



Eclipse Red Dot award winning stacking chairs are offered in a black or chrome frame with choice of armless or integrated arm. Choice of upholstered seats or poly in 6 colors. Available with tablet and ganging brackets. Stack 15 high on the floor or cart.



Splash offers a wide variety of customizable options. Choose from 2 frame finishes, 7 poly colors and 9 mesh colors. Available with or without arms. Offered as a high-desntiy stackable chair (up to 45 high on the cart or floor), bar stool, counter stool & task chair or stool.



Eclipse Wired indoor-outdoor stacking chairs are offered in a variety of colors. Optional upholstered seat. This Red Dot award-winning series is a visual match to the indoor Eclipse series.

Splash Air Good Design award winning chairs offer indoor-outdoor solutions with or without arms in a variety of colors. Offered as a stackable chair, counter stool or bar stool.

multi-use (includes stacking, nesting, light task & stool)



Zee delivers a single shell chair with integrated arms and an open design back offered in 7 colors. Available as a stackable chair, a guest chair on a wood base, a counter stool, a bar stool, a light task chair, a light task stool & an extra-tall light task stool.



Reset chairs are offered in matte black or magnet grey frames and 9 mesh colors with or without arms. Available as a nesting chair, task chair, task stool or extra-tall task stool.

Vista II stacking chairs are available on silver with grey glides or black with black glides 4-leg bases. Pair with choice of a poly, mesh or upholstered back and an optional arm. Offered as a chair, bariatric/mother's chair or a bar stool.



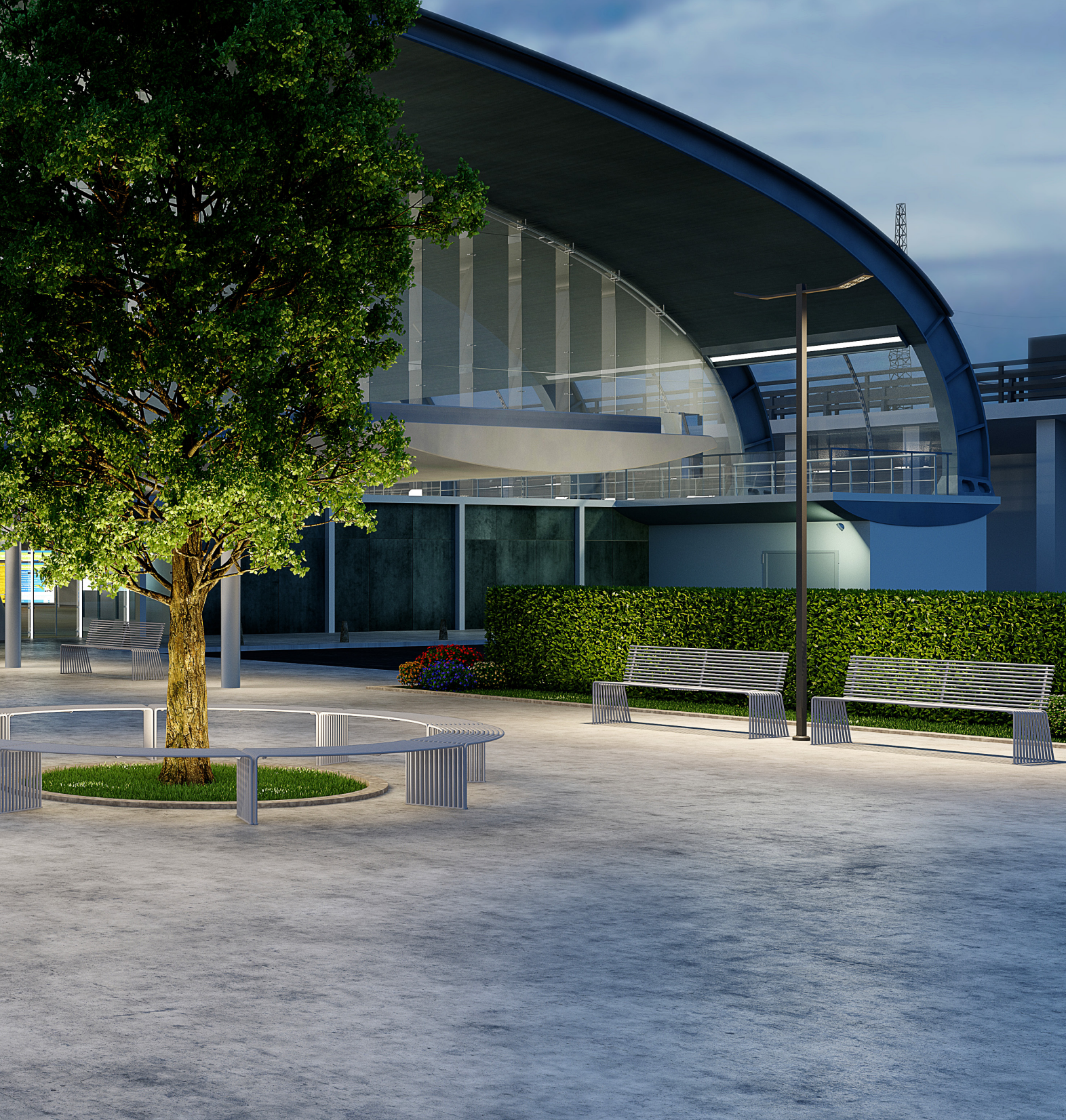
Sutro light task chairs and stools are offered with 4 poly colors, optional seat and optional seat and back. Arms are optional. Available as a stackable side chair, light task chair or light task stool in tall or extra-tall heights.



Spec Stools are backless seats with choice of hands-free or hand-activated height adjustments. Available in stool, tall stool or extra-tall stool heights.



outdoor landscape furniture



Explore the Italian designed collections of benches, tables, chaise lounge chairs and more in the outdoor collections book.

discover more

viaseating.com

instagram: [via_seating](#)

linkedin: [via-inc](#)

pinterest: [viaseating](#)

twitter: [via_seating](#)

facebook: [viaseatingteam](#)

youtube: ["Via Seating"](#)



Solutions: Seating Collection Overview

2021

Please visit our website to find your local representative and browse additional seating solutions.

www.viaseating.com

toll-free: 800-433-6614

phone: 775-331-6001

email: marketing@viaseating.com

Via Seating 205 Vista Boulevard,
Sparks, Nevada 89434



© Via Seating 2021