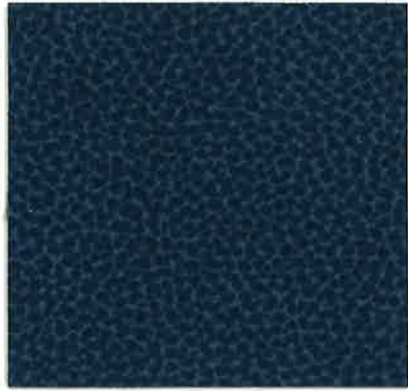


Brisa® | Original & Distressed



533-5802 Ash ☹️

Ultraleather® | Reef Pro



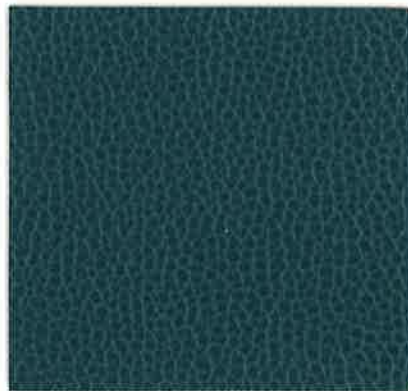
624-2627 Captain

Ultraleather® | Pro



554-3894 Hazelwood

Ultraleather® | Promessa



363-2604 Stone Blue



533-3863 Cream



533-3822 Bone



533-2698 Sterling Blue



533-5820 Quicksilver



533-3200 Peat



535-3871 Moccasin*



533-2621 Blue Sea



535-5679 Iron*



533-3913 Truffle



533-4488 Olive



533-2694 Night Navy



533-5749 Black Onyx ☹️



624-3487 Sea Star



624-1415 Clownfish



624-4392 Algae



624-2632 Beluga



624-3561 Boardwalk



624-1414 Coral



624-4316 Caribbean



624-3792 Hammerhead



624-3536 Lionfish



624-1413 Octopus



624-2722 Saltwater



624-5288 Squid



554-0008 White Wash



554-8251 Melon



554-2711 Blueberry



554-5648 Cloud



554-3595 Cork



554-3835 Raw Sienna



554-2616 Oxford Blue



554-5626 Char



554-3444 Toasted Bagel



554-9451 Azalea



554-4534 Sherwood



554-5618 Dark Knight



363-3463 Cocoa



363-3141 Fields



363-2695 Aquamarine



363-5715 Snow



363-3462 Woodpecker



363-3145 Bronze



363-2672 Corn Flour



363-5011 Battleship



363-3037 Horsehair



363-1387 Dogwood



363-2680 Atlantic



363-5845 Ebony

*Brisa® | Distressed

Collection	Composition	Weight / Thickness	Repeat	Abrasion	Air Permeability / Sound Absorption	Antimicrobial
Brisa® Original Brisa® Distressed Breathable Technology Acoustical Properties	100% Polycarbonate Polyurethane Surface 65% Polyester, 35% Rayon Backing	8.9 oz. per sq. yard 300 grams per sq. metre / Approx. 0.95 mm	8"V x 10.5"H / 203mm V x 267mm H (Distressed only)	ASTM D4157 / 300,000 DR** BS EN ISO 12947-2 / 160,000 R* **Wyzenbeek *Martindale	ASTM D737 / ASTM C423	N/A
Ultraleather® Pro¹ Ink & Denim¹ Resistant EPA-registered antimicrobial protection	100% Polycarbonate Polyurethane Surface 100% Rayon Backing	9.7 oz. per sq. yard 330 grams per sq. metre / Approx. 0.95 mm	N/A	ASTM D4157 / 500,000 DR** BS EN ISO 12947-2 / 200,000 R* **Wyzenbeek *Martindale	N/A	ASTM E2180
Ultraleather® Promessa® EPA-registered antimicrobial protection	100% Polycarbonate Polyurethane Surface 65% Polyester, 35% Rayon Backing	11.5 oz. per sq. yard 390 grams per sq. metre / Approx. 1.1 mm	N/A	ASTM D4157 / 400,000 DR** BS EN ISO 12947-2 / 180,000 R* **Wyzenbeek *Martindale	N/A	ASTM E2180
Ultraleather® Reef Pro¹ Ink & Denim¹ Resistant	100% Polycarbonate Polyurethane Surface 65% Polyester, 35% Rayon Backing	12.1 oz. per sq. yard 410 grams per sq. metre / Approx. 1.15 mm	N/A	ASTM D4157 / 400,000 DR** BS EN ISO 12947-2 / 200,000 R* **Wyzenbeek *Martindale	N/A	N/A

Width: 54"

Hydrolysis: 14+ Weeks
ASTM D3690 SECT. 6.11 (Hydrolytic Stability) / ISO 1419 Method C (Accelerated Ageing)

F/R Rating: ASTM E84 (adhered) - Class A
CA TB 117 - Pass
FMVSS 302 & 95/28 ANNEX IV - Pass
NFPA 260 - Class 1
UFAC - Class

Can be treated to meet FAR specifications. These fabrics, when treated and/or used with other compatible furniture components, have been shown to perform under the fire test conditions of ASTM E84 (unadhered), BS 5852 Source 0, 1 & 5 (Cig, Match and Crib 5), BS 7175, BS 5867 Part 2 Type B, IMO Part 8 and NFPA 701.

Adhesion of Coating: ASTM D751

Tear Strength: ASTM D2261

Breaking Strength: ASTM D5034

Tensile Strength: BS EN ISO 1421

Crocking: AATCC 8, Grade 4-5 Wet & Dry

Light Fastness: AATCC 16.3, 200 Hours, Grade 4
ISO 105 B02, Grade 6

¹REMOVAL OF MOST DENIM DYE MAY VARY DEPENDING ON THE QUALITY OF DYE AND THE PERIOD OF TIME THE STAIN SETS IN. DYE TRANSFER IS DIFFICULT TO CONTROL, NOT ALWAYS PREVENTABLE, AND MAY BE IRREVERSIBLE.

For more information on certifications and standards, sustainability, as well as cleaning and care instructions, please visit ultrafabricsinc.com.

via seating
205 Vista Blvd
Sparks, NV 89434
T 800.433.6614
www.viaseating.com

via
SEATING

ultrafabricsinc.com
Ultrafabrics® and logo, Brisa®, Promessa®, and Ultraleather® are trademarks of Ultrafabrics Inc.
Made in Japan.

Uf
Ultrafabrics